

SMART
summer

PARTIES

X Charterhouse
Square





WELCOME

CHARTERHOUSE SQUARE: A HIDDEN GEM FOR ENCHANTING SUMMER EVENTS.

Host an exclusive summer soirée at the enchanting Charterhouse Square, where history and elegance unite in a truly magical outdoor setting. Enjoy private use of this historic square from, complete with a beautifully adorned stretch tent, garden furniture, and a stunning outdoor covered bar serving chilled beverages. Guests will revel in the sounds of a live acoustic band, engage in fun garden games, and capture picture-perfect moments in a picturesque setting. With a warm welcome of sparkling wine or Pimm's, followed by a choice of vibrant bowl food or street eats, complemented by unlimited house wines, beers, and soft drinks, every detail is designed to create an unforgettable evening. Supported by expert staff, luxurious facilities, and impeccable service, this quintessential English garden party guarantees a seamless and extraordinary experience from start to finish.



**100 - 400
STANDING**

WHY CHOOSE CHARTERHOUSE SQUARE



HISTORIC ELEGANCE

Step into a venue where centuries of history meet contemporary charm. Charterhouse Square, with roots dating back to the 14th century, offers your event a timeless elegance like no other.



QUINTESSENTIAL ENGLISH GARDEN

Celebrate amidst lush lawns, vibrant wildflowers, and the soothing ambience of a true English garden. Charterhouse Square is your perfect summer oasis right in the heart of London.



PRIME LOCATION WITH PRIVACY

Nestled between London's historic Smithfield and Clerkenwell, Charterhouse Square offers a rare combination of central convenience and exclusive privacy—ideal for those seeking a retreat without travel.



ARCHITECTURAL BEAUTY

Surround your event with the breathtaking charm of Georgian and Art Deco architecture. This architectural harmony provides a stunning backdrop that's as captivating as your celebration.



VERSATILE SPACE WITH HERITAGE CHARM

Charterhouse Square transforms from intimate garden gatherings to grand outdoor soirées to suit your unique vision.



EXQUISITE CATERING

Moving Venue brings a bespoke dining experience to Charterhouse Square, from innovative bowl food to vibrant street eats, every dish is crafted with fresh, seasonal ingredients.

FLOOR PLAN

Steeped in a history dating back to the medieval and Tudor eras, Charterhouse Square offers an enchanting escape from the bustle of urban life. Enjoy chilled rosé at our stunning undercover bar, revel in the beauty of vibrant florals, and soak up the quintessential summer vibe in this one-of-a-kind outdoor setting. Perfect for elegant parties, Charterhouse Square invites you to make memories in a space that is as historic as it is beautiful.







THE SQUARE

Step into the timeless charm of Charterhouse Square, where history and nature blend seamlessly to create an idyllic retreat for your summer celebrations. Nestled on the edge of the City, this privately-owned oasis features lush lawns, mature trees, vibrant wildflower meadows, and stunning planted beds that capture the essence of an English garden.



**EXCLUSIVE SUMMER SOIRÉE
AT CHARTERHOUSE SQUARE**

Experience the quintessential English garden party in one of London’s most historic and enchanting outdoor venues. From the moment your guests arrive to the last toast under the stars, every detail is meticulously curated to create an unforgettable evening.

WHAT'S INCLUDED



VENUE & ATMOSPHERE

- Beautifully decorated stretch tent and garden furniture
- Stunning outdoor bar serving chilled beverages
- Live acoustic entertainment to set the perfect summer vibe
- Fun garden games to entertain guests
- Dedicated photo opportunities in a picturesque setting



EXPERT STAFF & SERVICE

- Professional bar staff (including wine waiters, bar managers, and team)
- Full catering team: Kitchen, service staff, and porters
- All necessary barware, service ware, and kitchen equipment, including ice buckets, glassware, and refrigeration



DRINKS & DINING

- A warm welcome with 1.5 glasses of sparkling wine or Pimm's per guest
- A choice of bowl food or street eats menu (5 bowls/items per person)
- Unlimited house wines, bottled beers, and soft drinks throughout the evening



CONVENIENCE & COMFORT

- Luxury WC and cloakroom facilities
- Catering management and a dedicated Event Manager
- On-site security, first aid, and cleaning personnel



UNIFORMS & COCKTAIL



STYLING & THEMING



GARDEN GAMES



CROQUET

A classic, elegant lawn game involving wooden mallets, balls, and hoops.



BOULES

Though French in origin, boules is a popular garden game in the UK, involving tossing metal balls to land close to a target ball.



GIANT CONNECT 4

A supersized version of the classic strategy disc game aiming to be the first player to get 4 in a row.



GIANT JENGA

A supersized version of the classic block-stacking game, adding extra tension and fun.



GARDEN CHESS

A giant chessboard with beautifully carved wooden or marble pieces, turning a mental challenge into a visual spectacle.



CATERING

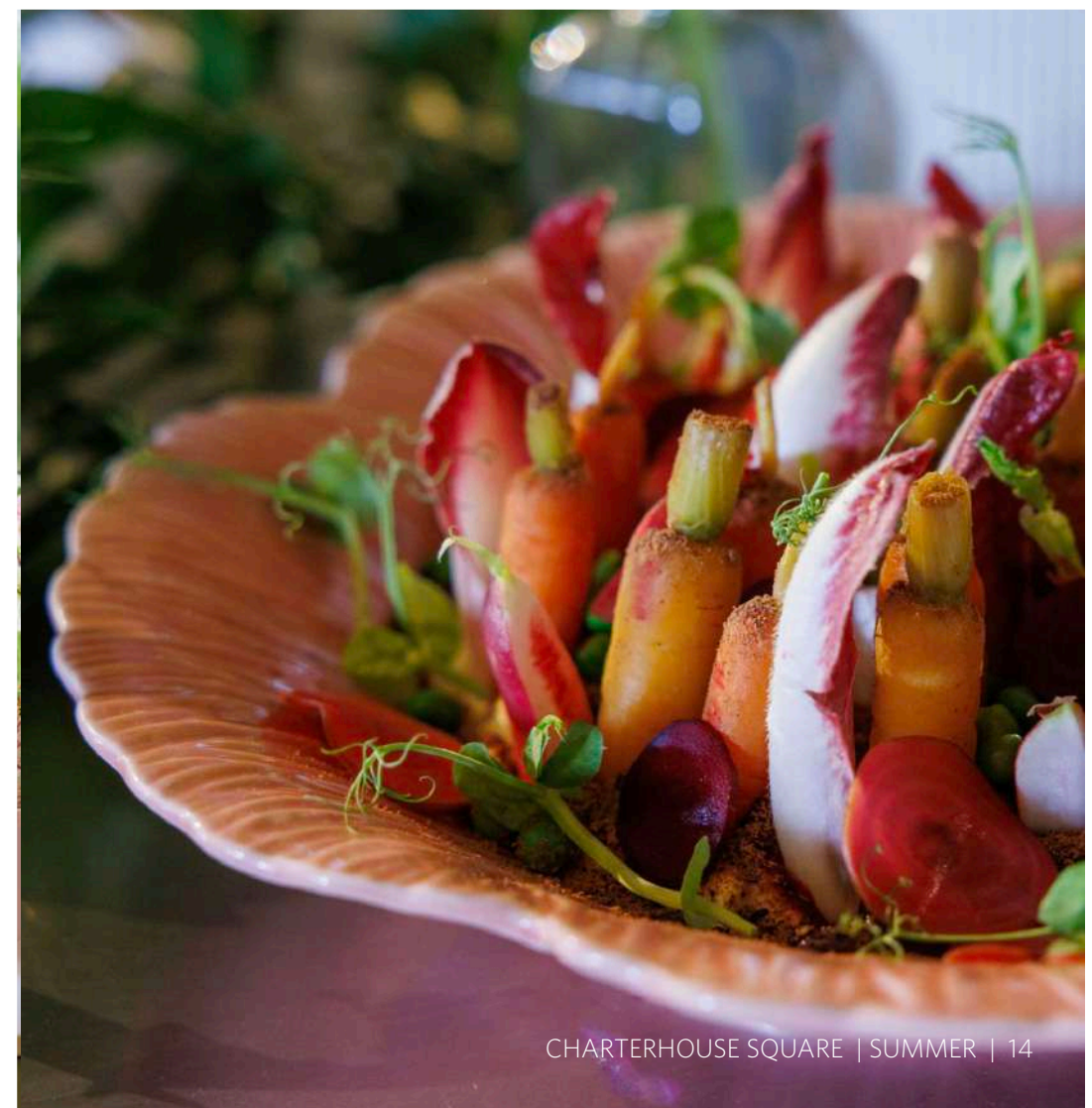
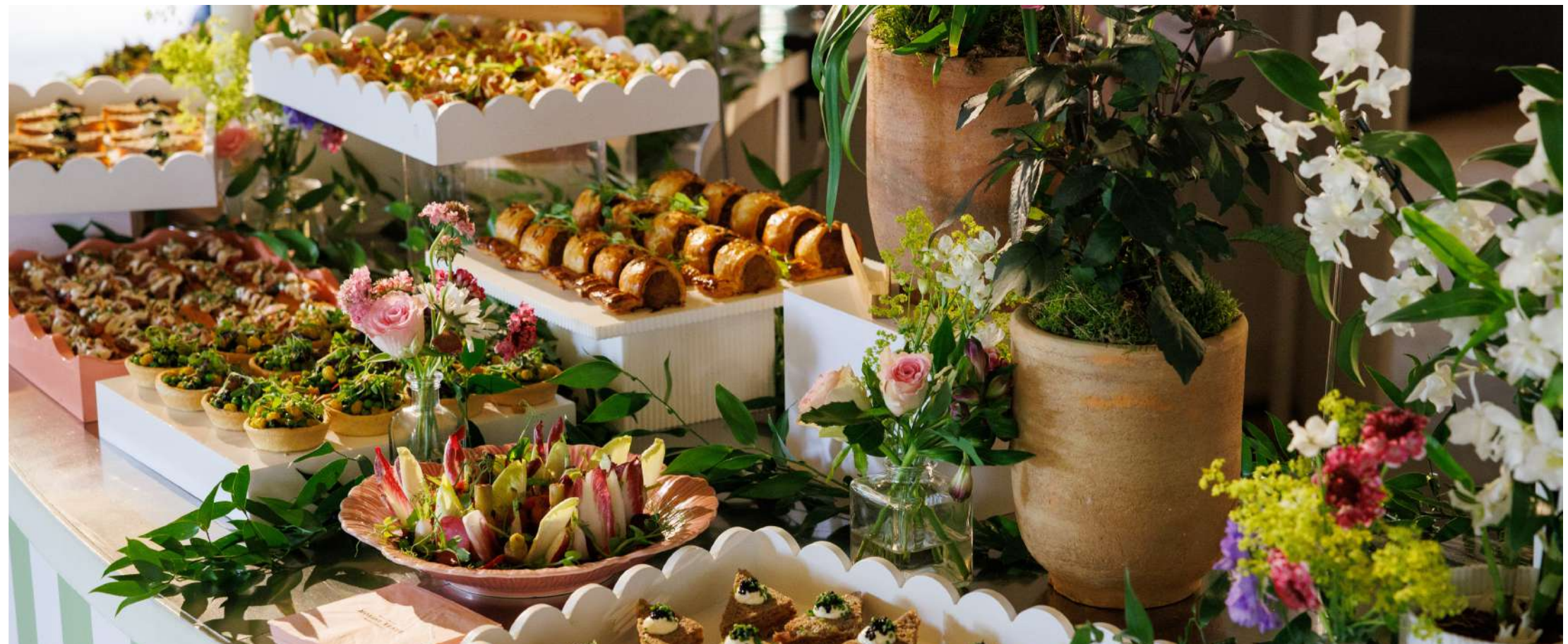
51°29'04.7"N 0°02'15.8"W

MOVING VENUE

VENUE CATERERS

Moving Venue is Charterhouse Square's trusted catering partner, renowned for delivering exceptional culinary experiences and being London's most experienced caterer. With a reputation for exquisite food and impeccable service, Moving Venue is proudly featured on the accredited supplier list of over 40 iconic venues across London. Moving Venue's bespoke menus from field to fork are designed to reflect the latest seasonal offerings, blending creativity with quality to deliver vibrant, expertly crafted dishes.





GREEN LEVY

A discretionary Green Levy of 50p per guest has been added to this quote, supporting our sustainability initiatives. This contribution helps offset your event's carbon emissions and funds impactful global and local causes through B1G1, with new projects supported each quarter. You can track the impact of your support via a live dashboard on our website.

Our sustainability pledge aims to reduce carbon emissions by 5% annually, achieve carbon neutrality by 2030, and reach net zero by 2050 through our "reduce, measure, and offset" policy. This optional charge makes incorporating environmental and CSR efforts into your event easy. If you prefer to opt out, simply inform your Sales Manager.

“As a business, we believe that good environmental practice is also good economic practice.”



LOCATION

MAINLINE RAILWAY STATIONS:

Farringdon: 6-minutes

Barbican: 2-minutes

ADDRESS:

CHARTERHOUSE SQUARE,
BARBICAN,
LONDON
EC1M 6AN



Charterhouse Square



020 7836 1035



smartsummerparties.co.uk



venues@smartgroupltd.co.uk



[smart.parties](https://www.instagram.com/smart.parties)